



Alberta College of
Speech-Language Pathologists
and Audiologists

Concurrent Practice: What Members Need to Consider

Cheryl Blair, AuD, R.Aud

Audiology Advisor

April 23, 2024

Helpline for
technical issues:
587-525-7730
admin@acslpa.ca

Objectives

1

What is Concurrent Practice

2

Engaging in Concurrent Practice

3

Considerations

ACSLPA's Standard on Concurrent Practice

Standard Area 1.0, Service Delivery

1.6

Concurrent Practice

A regulated member of ACSLPA participates in concurrent practice only in situations in which the benefits outweigh the risks.

<https://www.acslpa.ca/members-applicants/standards-of-practice/#Area1>

ACSLPA's Standard 1.6

Concurrent Practice

Expected Outcomes

Clients can expect that the regulated member considers their unique values and needs, explains proposed assessment and intervention procedures and obtains informed consent.

<https://www.acslpa.ca/wp-content/uploads/2022/06/Standards-of-Practice-Intro-and-Area-1.0-Combined-Jan-2023-1.pdf>

ACSLPA's Concurrent Practice Guideline

Guideline: Provides guidance to regulated members to support them in the clinical application of Standards of Practice.

- [Anti-Racist Service Provision for Speech-Language Pathologists and Audiologists](#)
- [Assessment of Linguistically Diverse Clients](#)
- [Clinical Documentation and Record Keeping – Revised June 2021](#)
 - [Supplement: What Constitutes Timely Documentation?](#)
- [Concurrent Practice](#)
- [Hearing Screening Guideline and Protocol](#)
- [Informed Consent for Service Guideline](#)
- [Speech-Language Pathologists' and Audiologists' Guideline for Working with Support Personnel](#)
 - [Supplemental Article – Working with Support Personnel](#)
 - [Supplement: Supervision Tips](#)
- [Therapeutic Relationships, Professional Boundaries and the Prevention of Sexual Abuse and Sexual Misconduct](#)
 - [Schedule 1 – Examples of Potential Sexual Abuse and Sexual Misconduct Situations](#)
- [Virtual Care Guideline](#)

<https://www.acslpa.ca/members-applicants/key-college-documents/>

What is Concurrent Practice



[Image](#) by Unknown Author is licensed under [CC BY 4.0](#)

Engaging in Concurrent Practice: Audiology

Testing Hearing



Fitting Amplification



Engaging in Concurrent Practice: SLP

Educational SLP



[This Photo](#) by Unknown Author is licensed under [CC BY-SA-NC](#)

Private SLP



[This Photo](#) by Unknown Author is licensed under [CC BY-SA](#)



Alberta College of
Speech-Language Pathologists
and Audiologists

Considerations

Guiding Principles



Compliance with ACSLPA
Code of Ethics, Standards of
Practice, and Relevant
Legislation



Privacy and Information
Sharing (Assumptions,
Guiding Principles #2 & 3)



Inquire about other services
during the Case History
(Guiding Principle #1)



Consent not Given
(Guiding Principle #4)

Benefits and Risks (Guiding Principle #9)



Risk: Opposing Interventions

Benefits: Complimentary Interventions



What is Appropriate/Not Appropriate in Concurrent Practice?
(Guiding Principles # 6 & 7)

Issues to Consider (Guiding Principle #10)

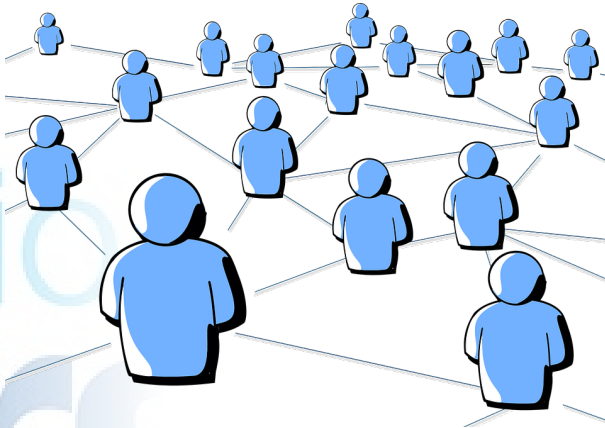


Illustration by Unknown Author is licensed under CC BY



Communicate!!

(Guiding Principle #3)



communication
matters

Duplication of Services





Documentation

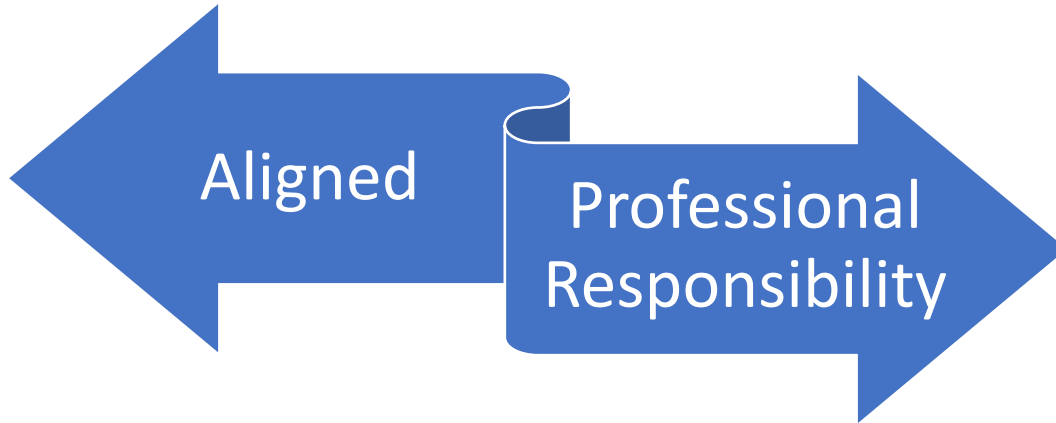
Guiding Principles 3, 5, 8, & 11

Documentation is a **critical** aspect of a healthcare professional's responsibilities

- Serves as legal and professional record of services provided
- Critical for meeting ethical responsibilities of transparency, accountability, and continuous improvement in your practice

Managing Difficult Conversations

Guiding Principle #11



Think about:
Resolving disagreements
Professional, aligned communication to
client/patient/families

Client Centered Care

Guiding Principle #8

Keep the focus on the
client!





Any Questions?

slp@acslpa.ca

audiology@acslpa.ca

Post-Webinar Survey: Concurrent Practice

